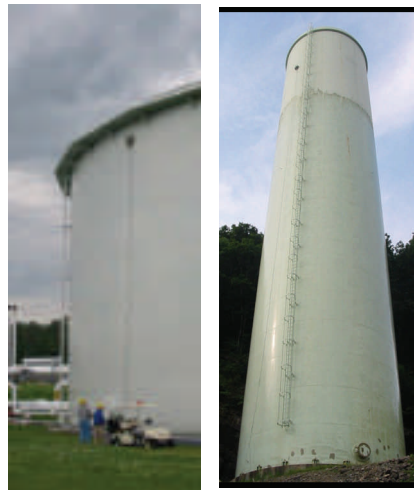


MobiInspect™ | Robotic Inspection System

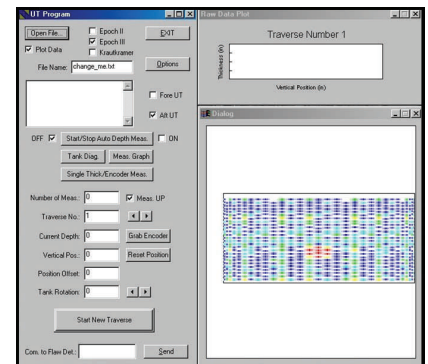
Five Ways Robotic Inspection Systems Save You Money

Eliminates Process Steps	Eliminates need to use man-supports (scaffolding, lift truck, etc.)
Increases Safety	Supports remote management of inspection
Improves Quality	Automated data collection allows line inspection or continuous readings, data filters and reference checking
Optimizes Labor Mix & Flexibility	1 or 2 man automation teams allow less experienced employees to plan, manage and execute tasks
Increases Productivity	Decreases setup time, decreases time to inspect an area, and automates readings and results

Used at Tennessee Valley Authority sites and other utility company sites to inspect and produce reports on ferrous containment facilities. The twin drive track units are equipped with powerful magnet pads and a unique suspension system enabling the robot to traverse a wide variety of steel structures.

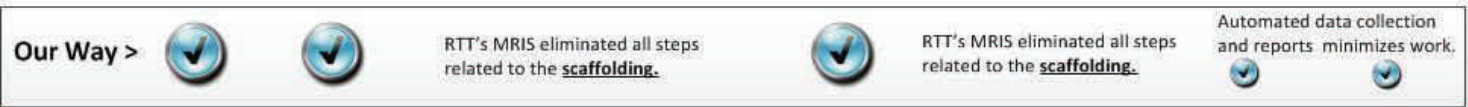


Furnaces, tanks, penstocks and pipes



Real-time data mapping and display

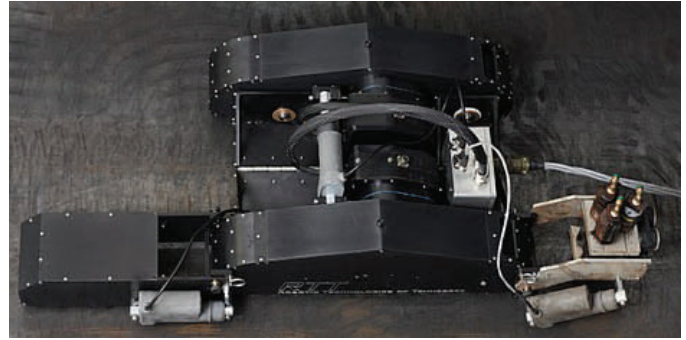
As-Is Process > Step 1 Step 2 Step 3 Step 4 Step 5 Step 6 Step 7 Step 8 Step 9 Step 10



For Additional Information Contact: Steve Glovsky @ 310-766-4316

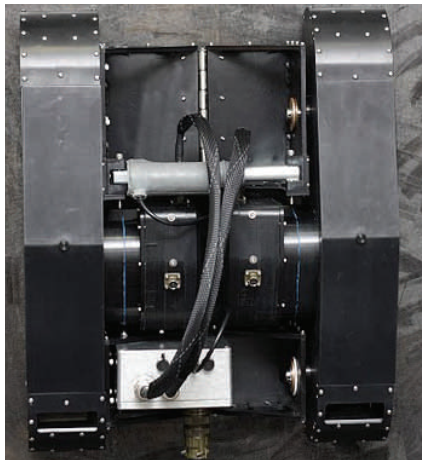
MobiInspect™ | Robotic Inspection System

MobilInspect™ is a mobile climbing platform equipped with an ultrasonic wheel transducer inspection device. Attached pneumatic needle scalars are used for surface preparation.

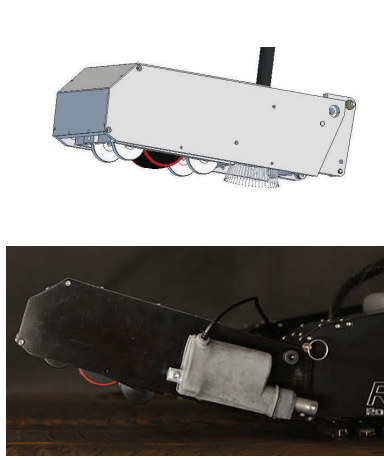


MobilInspect™ scans in a wide variety of positions including horizontal and vertical. The system breaks down into four primary components: crawler platform, transducer, surface preparation tool (scaler, etc.) and controller. The operation of these components allows one operator to plan, manage and operate an inspection.

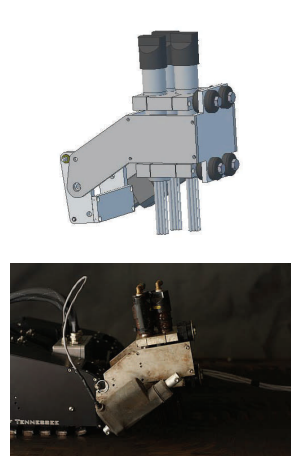
During operation the user has real-time control of the travel speed and direction via an intuitive twin joystick control pendant. In addition, positioning of the remote attachments (transducers and scalars) can be remotely adjusted via the control pendant. Software automatically collects data and logs the real-time vertical position of the transducer and the thickness readings retrieved automatically from the flaw detector.



Platform: Base Unit



Transducer



Surface Prep



Controller

Power Requirements: 120 VAC/50-60/1
 Air Requirements: 90 psi, std line air pressure supporting 6+ CFM flow rate (for scalars)
 Crawler Travel Speed 0.5 – 300 ipm
 Steering (Crawler): Infinitely adjustable, via twin joystick drive controller
 Couplant System: Water container and pump system for wetting wheel probe
 Standard UT Gage: Panametrics Epoch4+ or Epoch4XT
 Standard Tether: 100 ft

Standard UT Flaw Detectors: Panametrics, Krautkramer Sonatest
 Standard UT Probe: Sonatest 5 MHz single element transducer wheel probe
 Software: Data Collection Pro (Windows based data logger)
 Data Format: Auto generated text file to Excel
 Load Capacity: 100 lbs.
 Weights:
 Crawler: 65 lbs
 Transducer: 10 lbs
 Scaler: 25 lbs

For Additional Information Contact: Steve Glovsky @ 310-766-4316